

Baker County Courthouse Tree Plan | 2015

The following is a general outline addressing several issues pertaining to the Courthouse trees. Of primary concern was safety to the public and those responsible for working in or around the trees. Many of the trees scheduled for removal have heart rot or other issues that jeopardize their long term stability. Several of the street trees have grown to destroy curbs, streets, and mechanical infrastructure around the Courthouse. This creates a continued liability for utility companies and Baker County. The following plan was constructed in cooperation with Baker County Facilities, OTEC, and the Baker City Tree Board to address the liability concerns while improving the overall value trees provide our community.

Year 1 (2015)

Remove Maples 1,2,5,6, and 8.

OTEC will be responsible for maples 1,2,5, and 6.

Baker County Facilities will remove Maple 8

The area around Maples 1,2,5, and 6 will be replanted with type I trees per Tree Board selection and approval in Fall of 2015. Maple 8 will be replaced by type I or II per tree board selection. Additional trees available for planting from OTEC voucher program will be placed around the Courthouse per Tree Board review.

Baker County Facilities will also prune Maple 14, Chestnut 1, Linden 1 and Maples 15-17 as time and funds allow(Completed 3-20-15).

Year 2 (2016)

Remove Maple 7, Maple 13 and Chestnut 2

OTEC will be responsible for Maple 7

Baker County Facilities will remove Maple 13 and Chestnut 2

Maple 7 will be replaced by a type I tree. Maple 13 will not be replaced due to poor location. Chestnut 2 will be replaced with type II tree per Tree Board selection and approval.

Baker County Facilities will prune the Linden, Maples 18, 19, and Birch 1.

Year 3 (2017)

Remove Maple 4 and Maple 10

OTEC will be responsible for Maple 4.

Baker County Facilities will remove Maple 10

Maple 4 will be replaced by a type I tree and Maple 10 will be replaced with a type II tree per Tree Board selection and approval.

Baker County Courthouse Tree Plan | 2015

Pruning will be completed on all smaller ornamentals and maples on north side of Courthouse.

Year 4 (2018)

Remove Maple 3 and Maple 12

OTEC will be responsible for Maple 3

Baker County Facilities will remove Maple 12

Both trees will be replaced with type I trees per Tree Board selection and approval.

Pruning of Birch 2 and Conifers will be completed

Year 5 (2019)

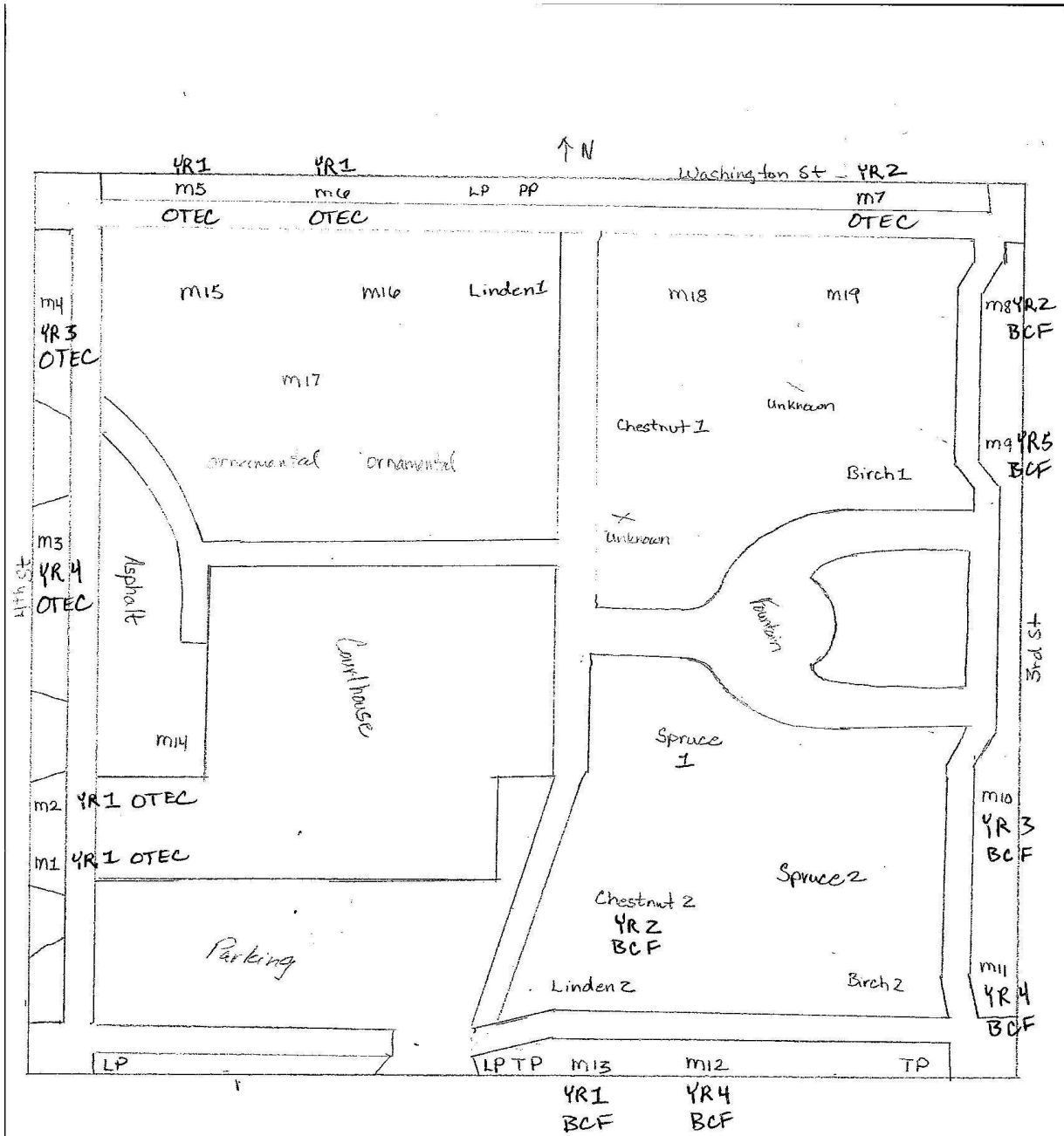
Remove Maple 9 and Maple 11

Baker County Facilities will be responsible for removal of both trees

Both trees will be replaced with type I or II trees per Tree Board selection and approval

Baker County Courthouse Tree Plan | 2015

Tree Removal Schedule and Responsibility

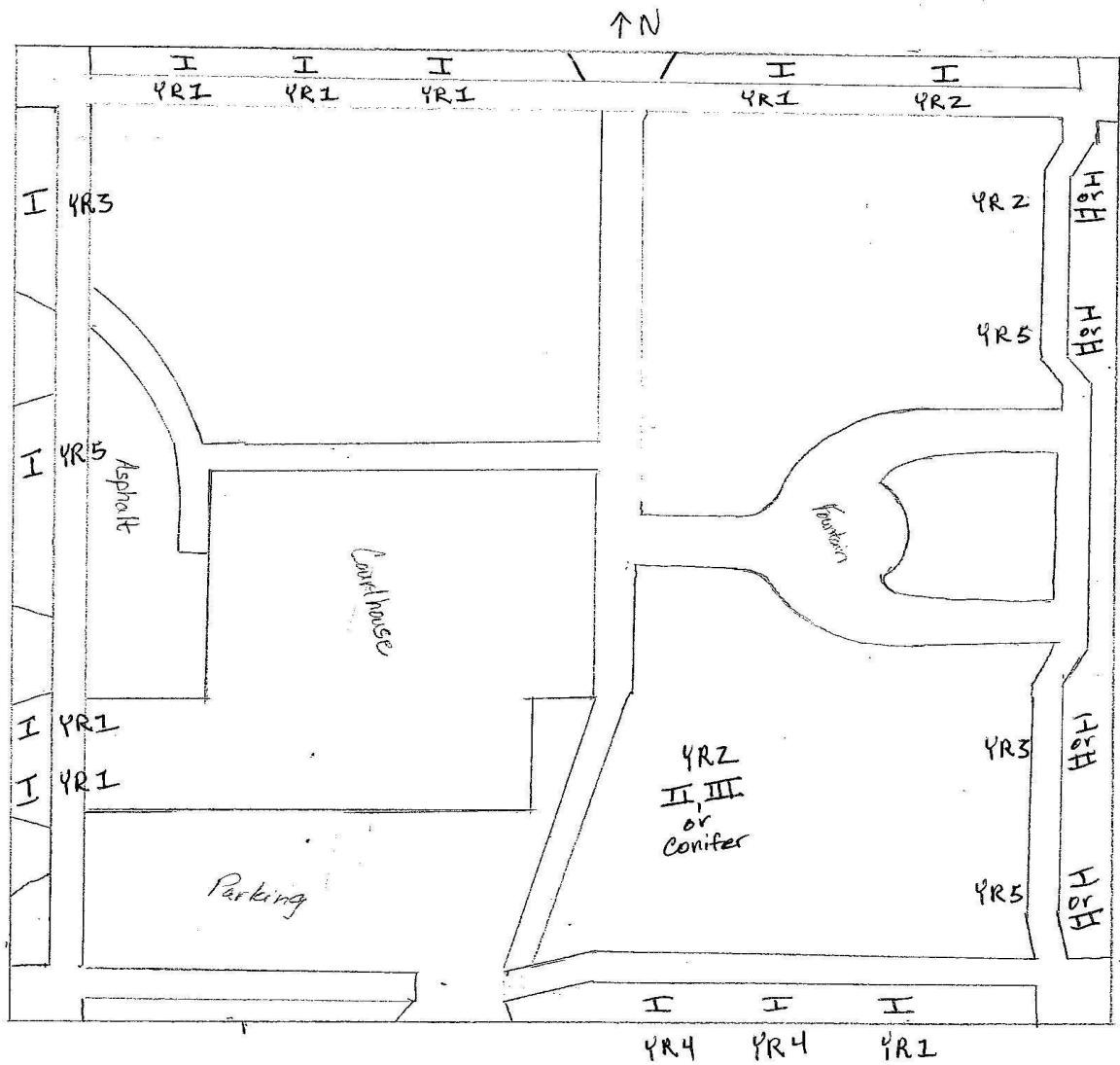


OTEC-Oregon Trail Electric Coop

BCF-Baker County Facilities

Baker County Courthouse Tree Plan | 2015

Tree Replacement Type and Schedule



Sample verbiage for posting prior to removal :

I will be leaving soon to make room for
a new healthy tree.

Rot and Decay are causing the trunk
and limbs to fail, to keep everyone
safe, this tree will be replaced.

New tree planting will allow for repair
to damaged curbs, piping, and
provide for utility maintenance safety.